



Harlequin homes

AMETHYST | SAPPHIRE | TANZANITE

TUCKTON CLOSE

WWW.HARLEQUIN-HOMES.CO.UK

3 NEW PROPERTIES FOR SALE AT TUCKTON CLOSE



SET IN A QUIET AND VERY DESIRABLE PRIVATE ROAD IN TUCKTON CLOSE, THESE FAMILY HOMES ARE JUST A SHORT WALK TO A VARIETY OF SHOPS AND RESTAURANTS IN SOUTHBOURNE AS WELL AS LOCAL BEACHES.

ALL OFFER PRIVATE GARDENS, GARAGE, STYLISH LIVING ACCOMMODATION AND A 10-YEAR WARRANTY.



SPECIFICATION

KITCHEN

- Contemporary fully-fitted designer kitchen
- Stainless steel oven
- Electric induction hob (or similar)
- Stainless steel extractor hood
- Integrated microwave oven
- Integrated dishwasher
- Fully integrated fridge / freezer
- Range of low voltage lighting
- Granite / Quartz / Silestone worktop

BATHROOMS

- Porcelanosa tiled floors and wall areas
- Stylish and contemporary taps, sanitary-ware and furniture.
- Chrome towel rails
- Either shower enclosure or
- Bath, incorporating shower screen and shower column
- Range of low voltage lighting

GENERAL

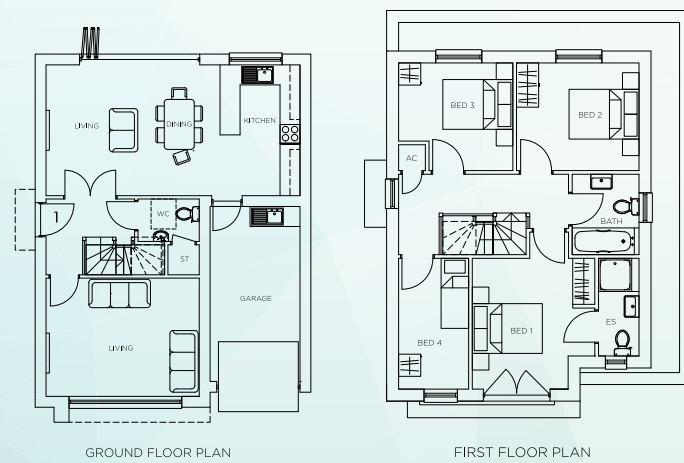
- Fully integrated alarm system
- Ample power, TV and telephone points throughout
- Hard-wire internet access points
- Contemporary doors, flooring and ironmongery throughout
- Beautifully designed staircase - hand-crafted from glass and wood
- State of the art gas central heating and water system
- Private rear garden with patio and large lawned area

EXTERNAL

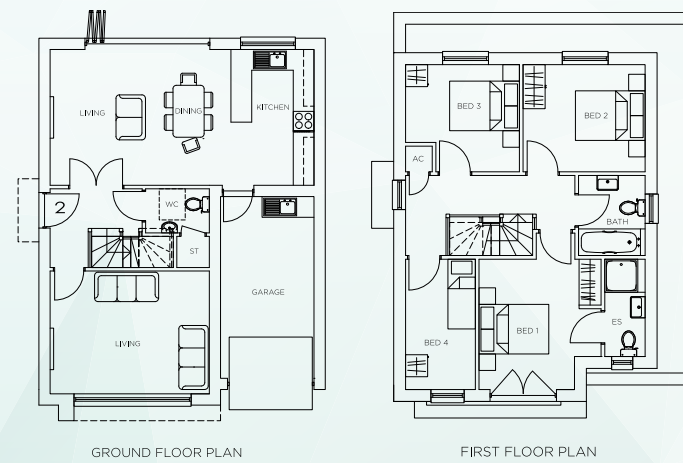
- Beautifully landscaped front garden with block-paved private driveway leading to:
- Private garage with contemporary remote controlled, electric "up & over" door
- Security lighting



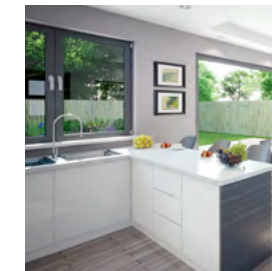
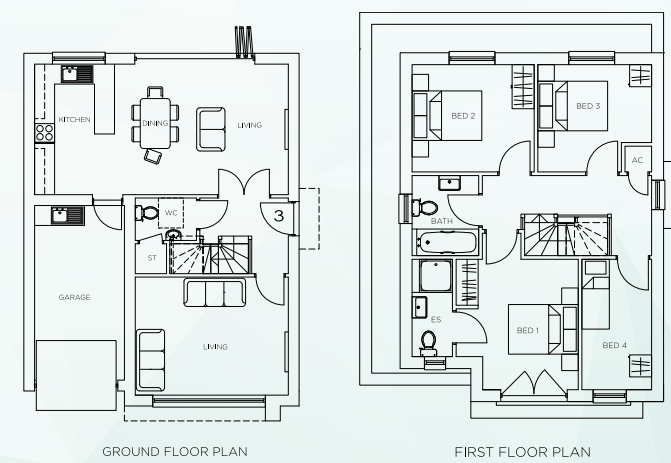
PLOT 1



PLOT 2



PLOT 3





01202 76 55 55

10 TUCKTON CLOSE
BOURNEMOUTH
BH6 3HY

WWW.HARLEQUIN-HOMES.CO.UK



01202 428555



01202 434300

It is not possible in a brochure of this kind to do more than convey a general impression of the range, quality and variety of the properties on offer. The artist's impressions, photographs, floor plans, configurations and layouts are included for guidance only. The Developer and Agent therefore gives notice to prospective purchasers that none of the material issued or visual depictions of any kind made on behalf of the Developer and Agent can be relied upon as accurately describing in relation to any particular or proposed house or development of the company. All such matters must be treated as intended only as illustrations and guidance. They are subject to change from time to time without notice and their accuracy is not guaranteed, nor do they constitute a contract, part of a contract or warranty. Prospective purchasers are therefore requested to check before entering into negotiations as to whether the specification has changed.